

Flow  
System

V1 lux

MCS







## MORE THAN COLD!

Art of Cryo the lifestyle division of the 1991 founded family company L&R Kältetechnik GmbH & Co. KG.

L&R is the only cryochamber manufacturer with inhouse refrigeration, control cabinets production and SPS-programming.

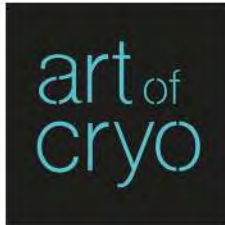
With 29+ years history of developing, producing, installing and servicing high-performance cryo-chambers we have proven our expertise and leadership.

Our elegant and highly effective Vaultz are the engine of the most successful cryo-centers and luxury spas around the World.

We are proud that our Vaultz are preferred by the most professional, exclusive and distinguished customers.

Clients' trust, feedback and long-term relations are our inspiration for future developments.

Thank you!



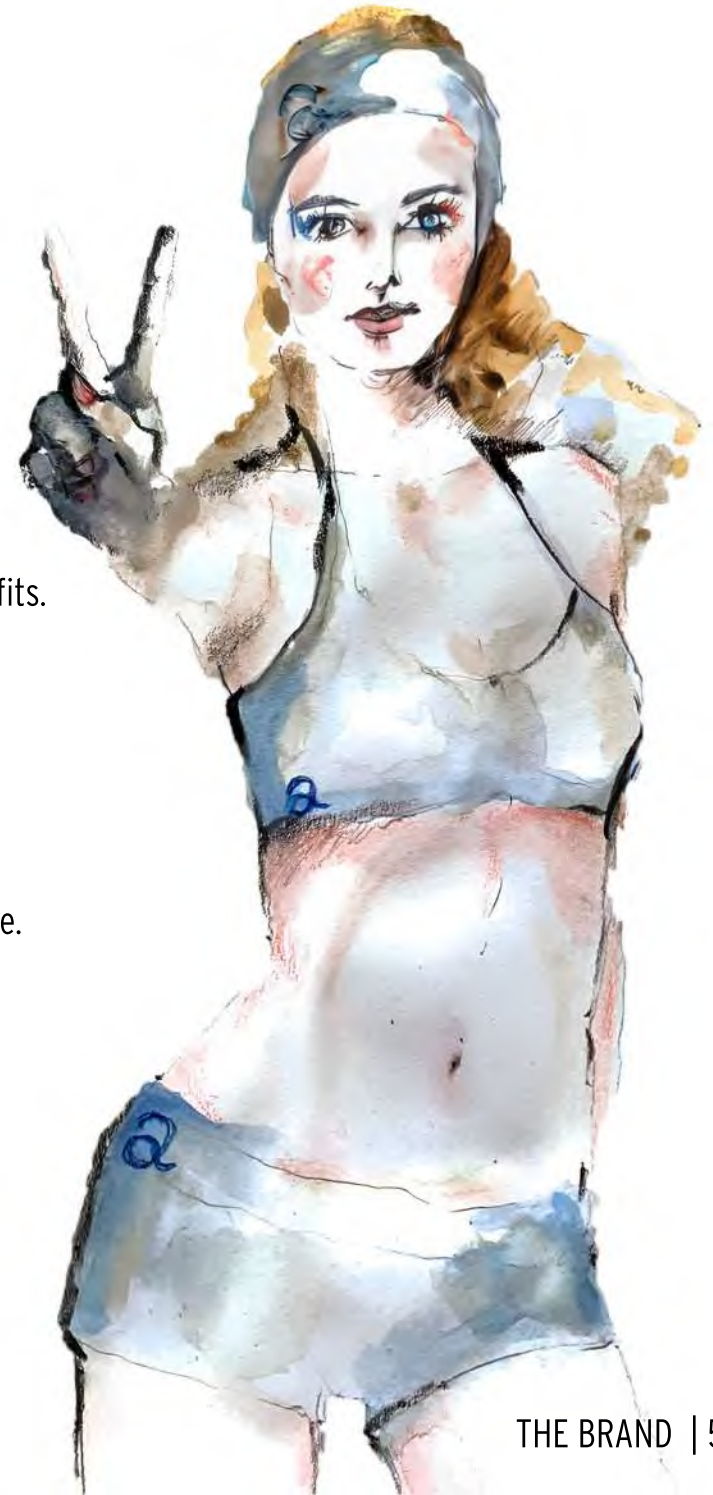
## JOY-UP YOUR LIFE!

Tec-Spa Module - a touchless treatment circuit, adds an innovative dimension to relaxation and recovery services with integrated approach and complex benefits.

## IN LESS THAN 30 MINUTES

TSM offers up to 16 treatment levels to enhance physical recovery, boosts mental clarity and promotes overall wellness in a short time. Individualized treatments are touchless, with no preparations and no down-time.

## YOUR WAY TO LONGEVITY.





# 8 MIN

## MORE THAN:

Contrast Therapy  
Deep Tissue Warmth  
Air Evacuation System

## MORE THAN:

Quality Charged Air  
Light Cocktail  
Neurobeats (SSM)  
Aromatherapy (FIS)  
Boost & Activation Module

Increased Flow  
Stimulate Cell Metabolism

Multi-sensory experience:  
smell, taste, move,  
look, hear and feel.





art of cryo

1.5-5  
MIN

THE NEW DIMENSION OF CRYO  
UNICAL VAULTZ V12

1.5-5  
MIN

ELEGANT  
PRIVATE  
LUXURY

art of  
cryo



8-24  
MIN

PERFORMANCE. LONGEVITY. REJUVENATION

FROM SPACE TO EARTH  
ALTERNATING DEEP FLOW TECHNOLOGY.



### The idea

of offering the finest contrast therapy in the world with a temperature difference of up to 170 Kelvin, ranging from + 60 °C to - 110 °C.

of taking it further, by combining different technologies, you can achieve even better results and save time.

### Background

combining several treatments can produce more effects or the opposite. With the Tec-Spa Module basis, Art of Cryo offers tailor-made solutions for a healthy preventative lifestyle.

### The Process

Tec Spa Module base consists of three products, which are used one after the other as follows.

1st step is an M.C.S. or unical M.C.S.

2nd step is single Vaultz, vario Vaultz or unical Vaultz

3rd step is Flow System.

### Better together

RECHARGE & PREPARE

DETOX & RELAX

LONGEVITY

HANGOVER

SLIMMING



30 MIN

# TEC-SPA MODULE

The solution for luxury spa and high-end wellness facilities seeking to offer premium services.  
TSM the innovative new dimension in relaxation and recovery services, adding multi-level benefits.

Tec-Spa Module is variable in set-up and scale: from space-saving Tokio Solution to Mega Projects for real luxury or a larger audience.



M.C.S.



single Vaultz V1 lux



vario Vaultz V3





vario Vaultz V2

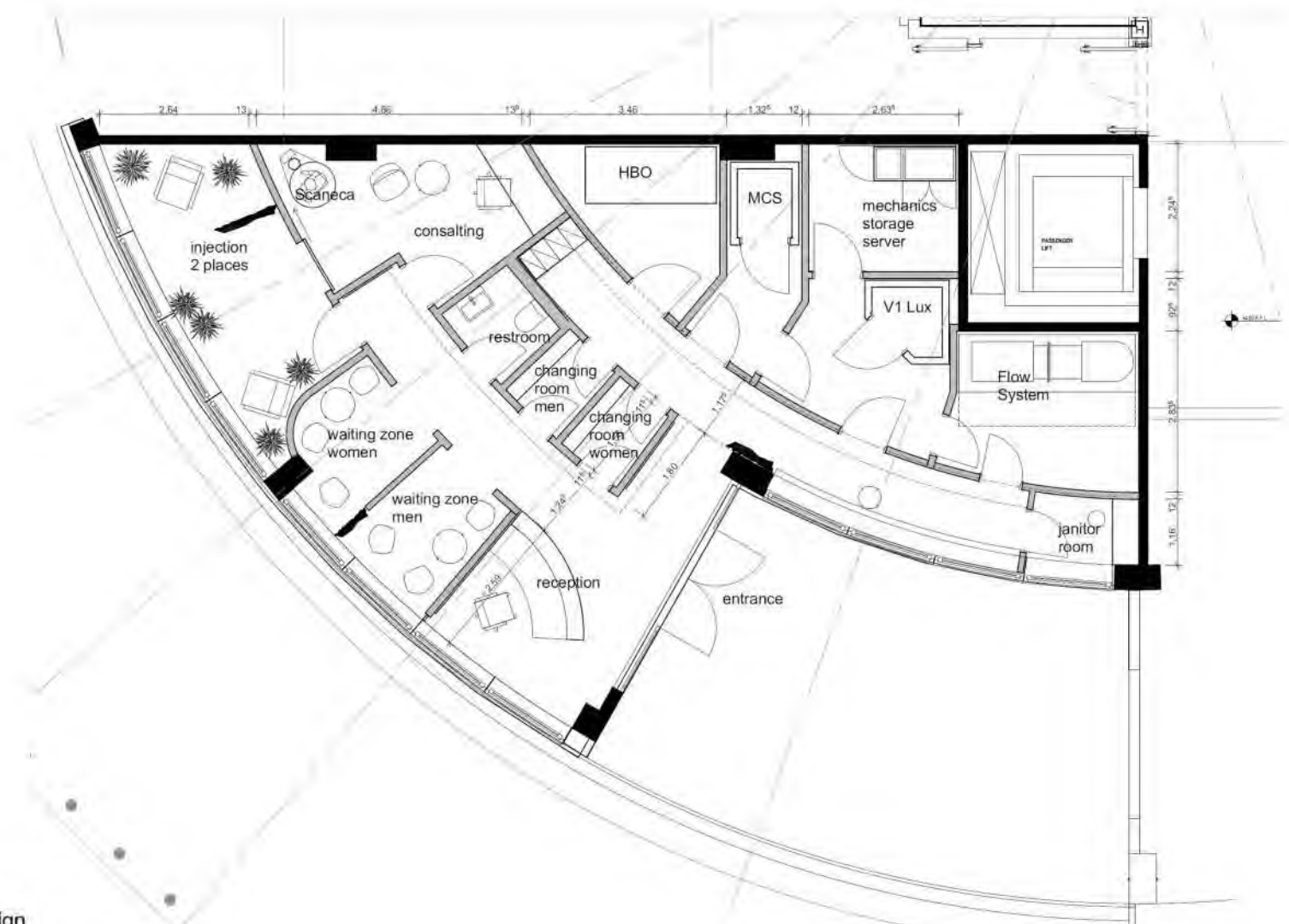


single Vaultz V1



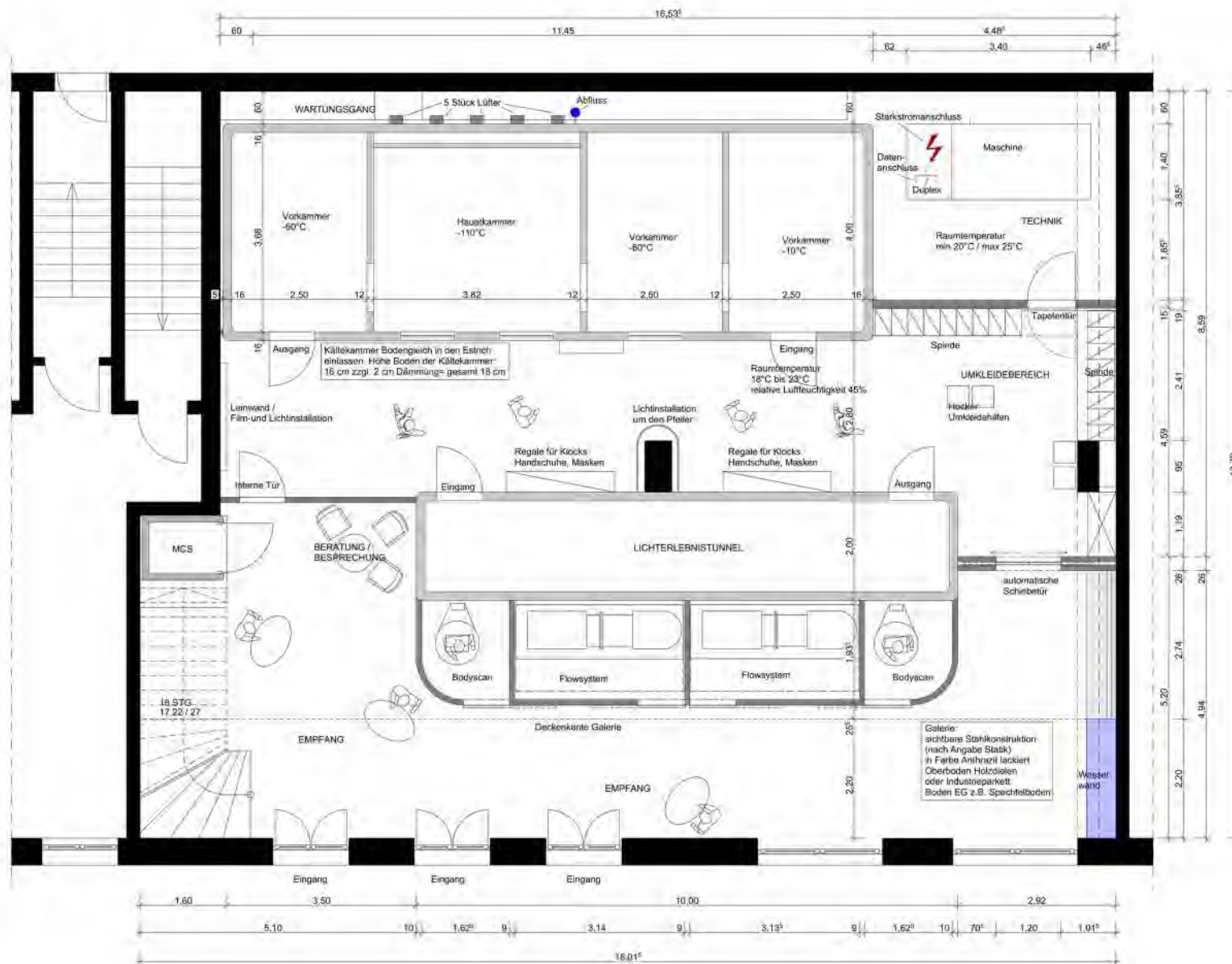
Flow System

Imagine you enter a groundbreaking M.C.S. Experience Tunnel followed by cryo-experience at  $-110\text{ }^{\circ}\text{C}$  in the largest cryochamber of the world.  
Contrast therapy at its finest.



Lotos Innenarchitektur / Interior Design  
 Dipl. Ing. Sabine Weber  
 info@lotos-innenarchitektur.de  
 www.lotos-innenarchitektur.de

art of cryo



Projekt: Cryofactory  
Madeira Savoy

Bauherr: Remedicool  
Art of Cryo

Planinhalt: GRUNDRISS  
ERDGESCHOSS

Blattgröße Din A2  
M= 1:50

Datum: 03.07.2023  
geändert 05.07.2023, 10.07.2023

Alle Maße sind am Bau zu prüfen!



INNENARCHITEKTUR  
KONZERTTE FÜR MENSCH + RAUM

Dipl.-Ing. Sabine Weber (Innenarchitektin) ANW / BDA


Von-Quell-Strasse 34  
51163 Köln  
info@lotos-innenarchitektur.de  
www.lotos-innenarchitektur.de

Fin 0221 169 206 30  
01577 20 41 887

Das Urheberrecht an allen Unterlagen verbleibt beim Planer/Hersteller. Die Abbildung einer vertragliche Genehmigung nicht vereinbart und nicht Drafen übertragen werden.

art of cryo




 x 1 person

 -75 °C

Technical Characteristics	V1
Vaultz Treatment Room	Single
Width	1 240 mm
Height	2 400 mm
Depth	1 560 mm
Weight	400 kg
<b>PURE ELECTRICITY DRIVEN</b>	
Cold Machine	Behind or Beside
Cooling system	Two Stage Cascade
Electrical Connection	3Ph/ 400 V / 32 A
Total Connected Load*	10 kW
Compressors	Semi-Hermetic
Work temperature	-75 °C
Weight - machine	550 kg
Interior Design	Elegant
Internet connection	Yes
Control panel	Tablet





 x 1 person

 -85 °C

Technical Characteristics	V1 lux
Vaultz Treatment Room	Single
Width	1 440 mm
Height	2 355 mm
Depth	1 540 mm
Weight	450 kg
<b>PURE ELECTRICITY DRIVEN</b>	
Cold Machine	
Cooling system	Two stage Cascade
Electrical Connection	3Ph/ 400 V / 32 A
Total Connected Load*	12 kW
Compressors	Semi-Hermetic
Work temperature	-85 °C
Weight - machine	670 kg
Interior Design	Elegant / Posh
Remote Activation	Optional
Internet connection	Yes
Control panel	Yes
Music playback	Yes
Treatment Timer	Yes



2 room  
version

 -60 °C  
-110 °C

 up to  
6 persons

## Technical Characteristics

V2

Vaultz Treatment Room

Two room version

Width

4 200 mm

Height

2 550 mm

Depth

2 400 mm

Weight

1 460 kg

## PURE ELECTRICITY DRIVEN

Cold Machine

Cooling system

3 stage cascade

Electrical Connection

3Ph/ 400 V / 63 A

Total Connected Load\*

23 kW

Compressors

Semi-Hermetic

Work temperature

-60 °C, -110 °C

Weight - machine

1 360 kg

Internet connection

Yes

Control panel

Carbon / Chrome

Video Camera

Yes, in -110 °C

Music

Yes, in -110 °C

Communication System

Yes, in -110 °C

Treatment Timer

up to 6 different



**3** rooms  
version

-10 °C  
-60 °C  
-110 °C

up to  
6 persons

## Technical Characteristics

**V3**

Vault Treatment Room

Three room version

Width

6 000 mm

Height

2 550 mm

Depth

2 400 mm

Weight

1 760 kg

## PURE ELECTRICITY DRIVEN

Cold Machine

Cooling system

3 stage cascade

Electrical Connection

3Ph/ 400 V / 63 A

Total Connected Load\*

23 kW

Compressors

Semi-Hermetic

Work temperature

-10 °C, -60 °C, -110 °C

Weight - machine

1 360 kg

Internet connection

Yes

Control panel

Carbon / Chrome

Video Camera

Yes, in -110 °C

Music

Yes, in -110 °C

Communication System


Yes, in -110 °C

Treatment Timer

up to 6 different

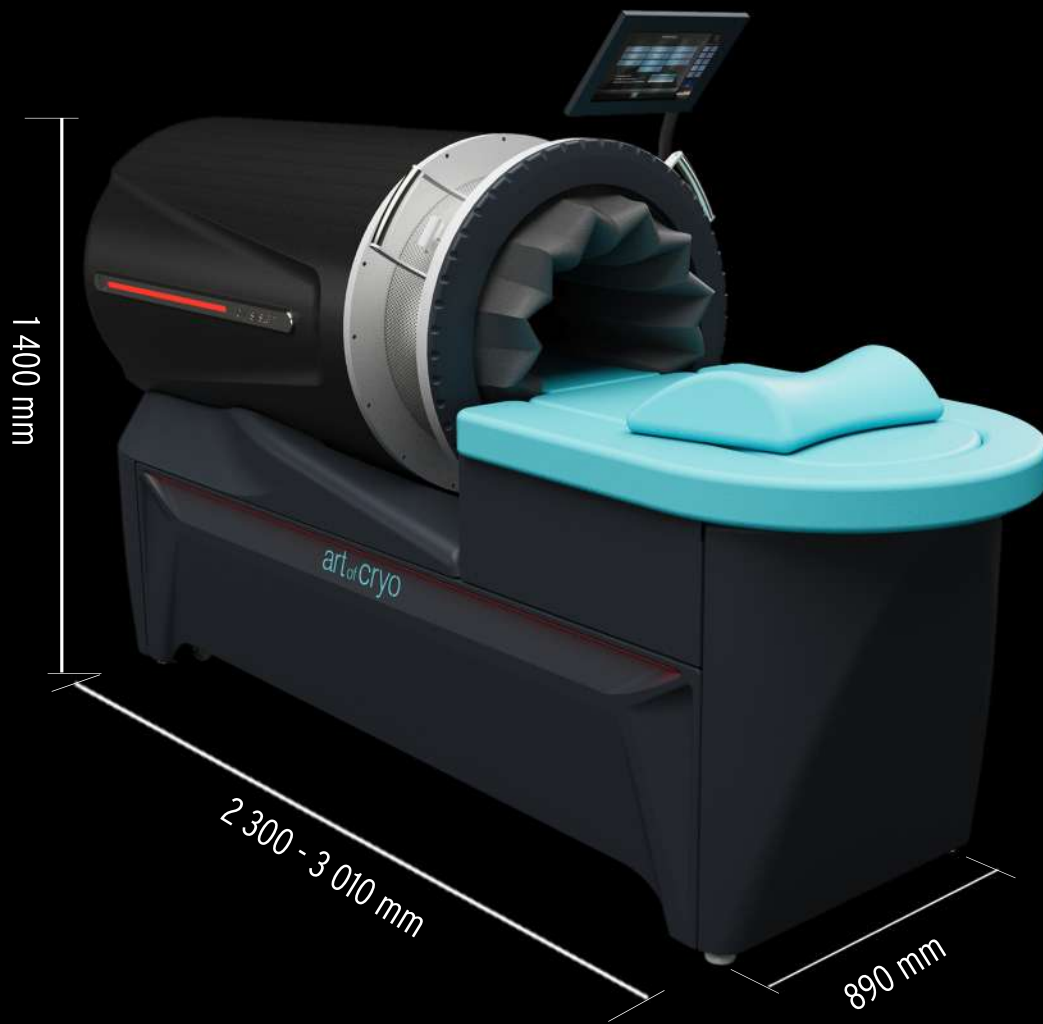
art of cryo



 x 1 person  
or 1 couple

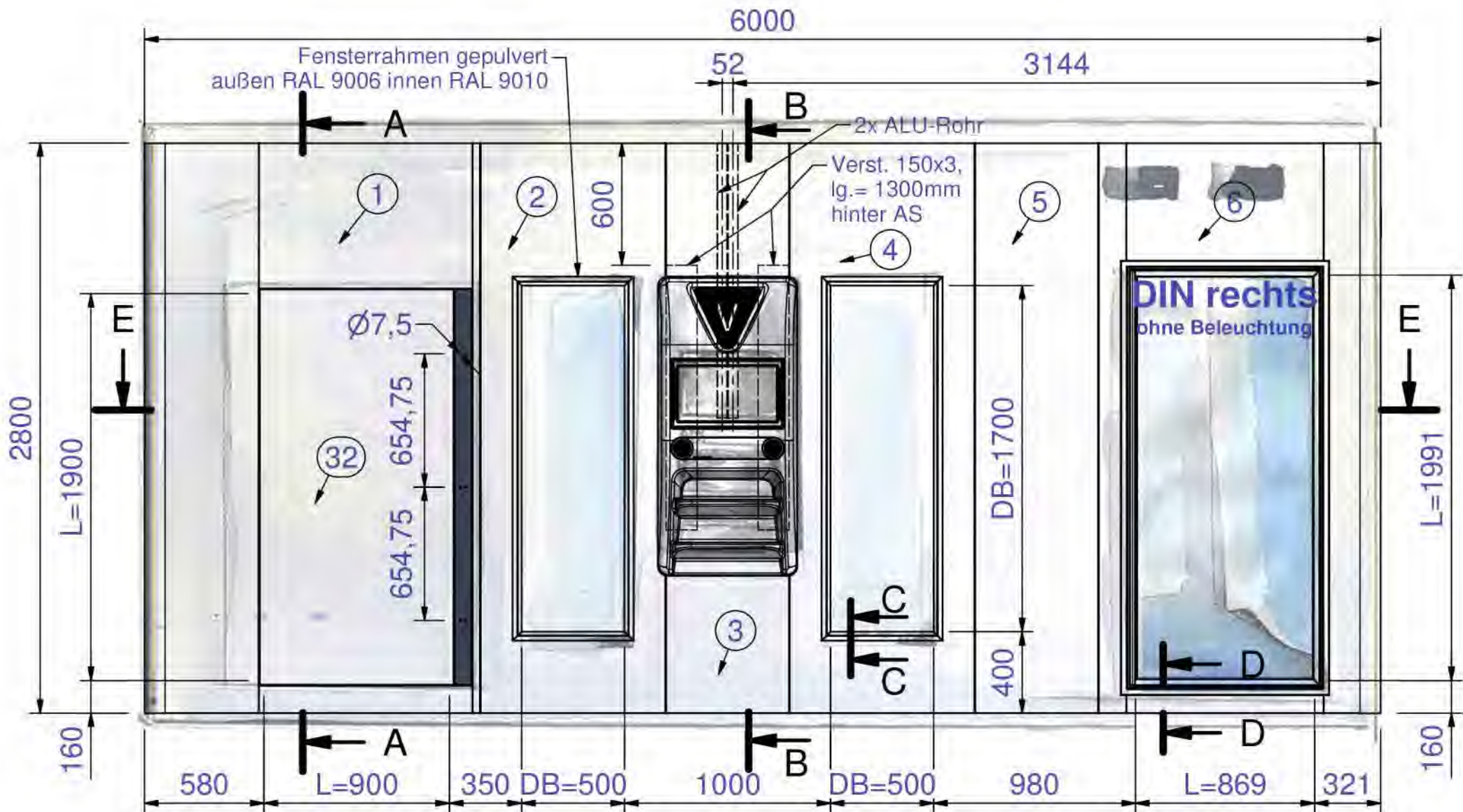
 from +30 °C  
to +60 °C

Technical characteristics	M.C.S.
M.C.S. Treatment Room	Single
Width	1 200 mm
Height	2 520 mm
Depth	1 720 mm
Weight	460 kg
Main voltage	230 V / 50 Hz
Power	2000 Watt
<b>MULTI CRYO-HACKING SYSTEM</b>	
Contrast Therapy:	
Deep Tissue Warmth (DTW)	30 °C to 60 °C
Sophisticated Air Evacuation System (SSM)	
Quality Charged Air (QCA)	up to 15.6 Mil / cm <sup>3</sup>
Light Cocktail (LC): Collagen Red, Performance Red, Calming Green, Vial Green, Calming Blue Vital Blue.	
Sound Stimulation Module (SSM)	Neurobeats
Fragrance Injection System (FIS):	Jungle Flower
	New Forest
	Ice Mint
Boost & Activation Module (BAM)	



Technical Characteristics	Flow System
Corpus	Motorized
Width	2 300 - 3 010 mm
Height	1 400 mm
Depth	890 mm
Weight	210 kg
<b>ALTERNATING DEEP FLOW TECHNOLOGY</b>	
Mains Voltage	230 V / 50-60 Hz
Power Consumption	2200 Watt
Current Intake	9A
Max Pressure	-120 / +40 mbar
Entry Comfort	Taxi Boarding Take-off
Closing Mechanism	Formula 1 style
Adjustable Backrest	Yes
Stretching Module	Yes
Stainless Steel LED Inlay	Indicate status
Control panel	Tablet







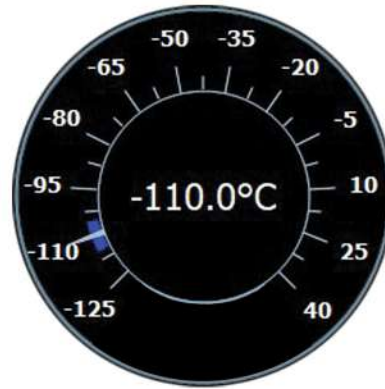


single | vario | unical

## VAULTZ

All Vaultz follow the highly efficient L&R machine design  
Special heat-resistant and pressure-resistant heat exchanger plates as cascade intermediate coolers  
Additional pre-deheaters to reduce the temperature of hot gas  
Control of all stages with electronic expansion valves  
Highly efficient oil management system  
Siemens control unit

Service Friendly Technology. Check every 4 200 compressor hours.  
Service router with interface for remote monitoring including PLC monitoring with an alert system (via e-mail)



## CONTROL

Touch screen control with intuitive and friendly multi-language interface.

On/ Off, Music Playback, Treatment Timer Start, Color Scheme Selection, Video Control, Communication System.

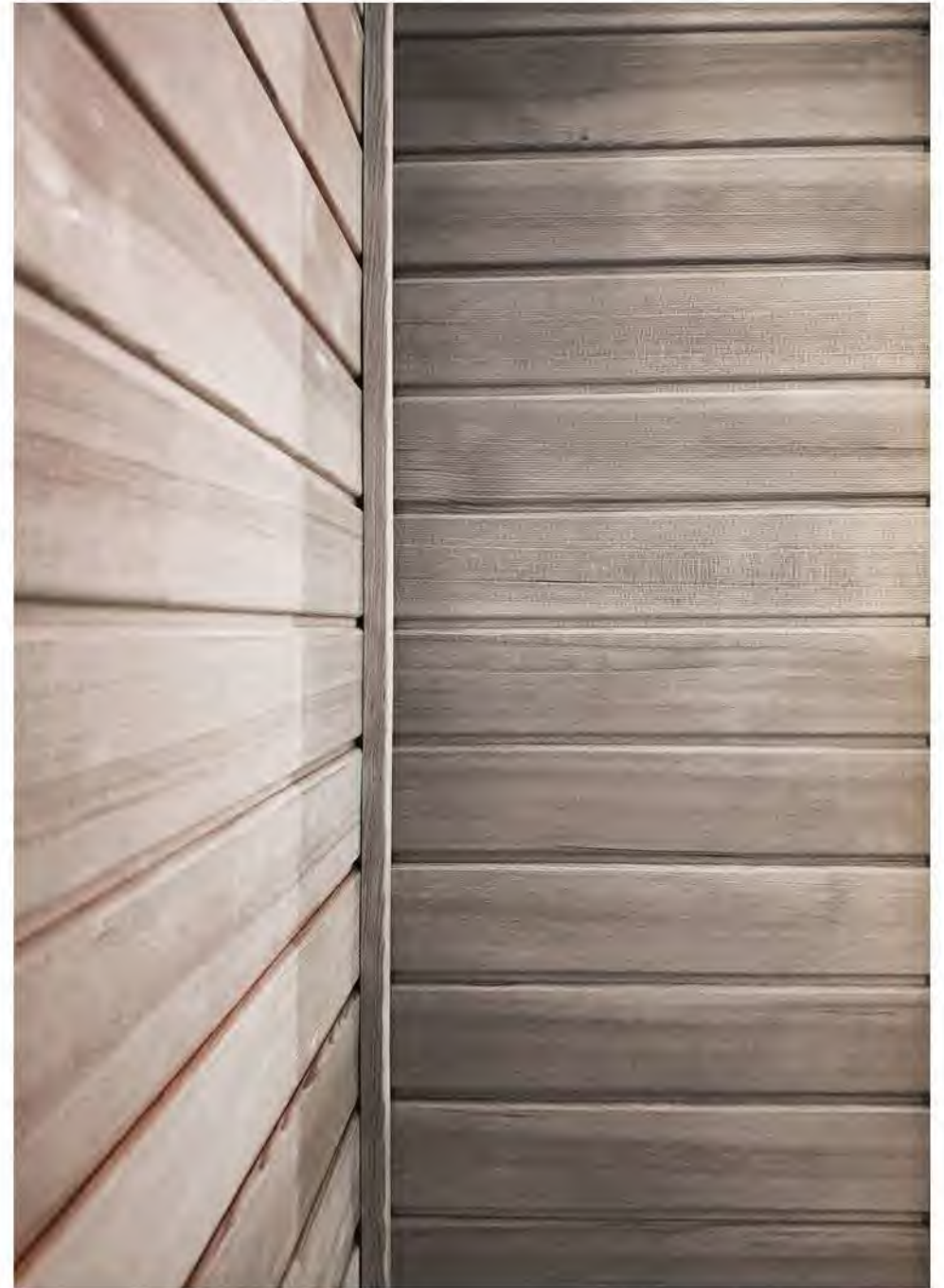
Real treatment room temperature monitoring.

Programmable and Automatic Operations. Stand-by mode overnight.

Exclusive carbon or chrome plated designed by Capristo for vario and unical Vaultz.



art of cryo



## TREATMENT ROOM

All Vaultz are spacious and comfortable whether designed for one or 20 guests to move and stretch. Offering clients optimal convection and maximum radiation by walls, ceiling and floor on target temperature and controlled air flow for stable and equally distributed sub-zero temperatures.

Exclusive stainless-steel interior by Capristo gives your Vaultz a posh look and increases surface for more radiation to make the treatment feel more intense. If you prefer a softer treatment experience with less radiation, choose Hemlock Wood Interior.



Elegant design, attractive look

Continuous from floor to ceiling exterior panels with rounded corners

Ultra-large windows for open view and extended comfort

All doors are inlaying flush with the adjacent frame

Full glass entrance door with continuous handle

Up to six light-guided treatment timers

Light guided breath-work

Multi-colored LED

Music playback





art of cryo





## unical M.C.S. EXPERIENCE TUNNEL

12 stations

Individualized "Cocktails" per targeted treatment generate more effects which are even further multiplied within the Tec-Spa Module.

M.C.S. treatments can be antiseptic, detoxifying, skin glow and appearance improve, collagen synthesis  
relaxation, deep recovery, feeling well, feeling balanced and energized  
relief for muscle tension and joint pain, lactate reduction and inflammation reduction  
metabolism and flow boost, immune function booster, performance booster... and much more benefits and effects.

M.C.S. is so much more!

## A PLACE TO RELAX

Selected Program: Guided Empowerment  
Protection: Protective Goggles

The program starts in seconds, I wear protective goggles and step inside. Entering the M.C.S. feels like a step into the future. M.C.S. welcomes me with a soft sound, I smell a nice natural scent and experience the stimulating play of Light Cocktail. I step closer and the Quality Charged Air flush with a deep breath into my lungs and over my warming up body, Deep Tissue Warmth getting deeper and deeper. I feel the slight air flow, keeping my warm skin dry. Calming neurobeats build a nice contrast to the Booster & Activation Module's vibrations. I close my eyes and let my body and mind relax.

This eight minutes fly away was too quick - I want more! And I am thinking of repeating the M.C.S. or to "jump" directly into the Vaultz and get the finest contrast therapy.





## PERFORMANCE, LONGEVITY, REJUVENATION.

Flow System is the most advanced and impactful, ready to transform the future of longevity and vitality.

Flow System works with ADFT - Alternating Deep Flow Technology.

ADFT applies individualized gentle to intense under-pressure, alternating with atmospheric and slight overpressure. The flow is directly stimulated from the tips of the toes up to the lower costal arch. Indirectly it activates the flow in the entire body. The "flow promotion" is natural, touchless, evenly distributed, powerful and beneficial.

Six treatment targets with five levels each.

The "Pro" treatments with intense under-pressure are only for well trained professional guests or after 20 training sessions available.

By applying controlled ADFT in cycles, the Flow System is an excellent treatment for body aesthetics, to keep strength, to prepare and boost performance, to regenerate, to detox, to support connective and deep tissues. Flow System is powerful to revitalize the human body and encourage deep relaxation.

Flow System has a positive impact on biological age which can be measured by ABI. Enhanced flow and reduced inflammation help to manage chronic conditions and improve quality of life.



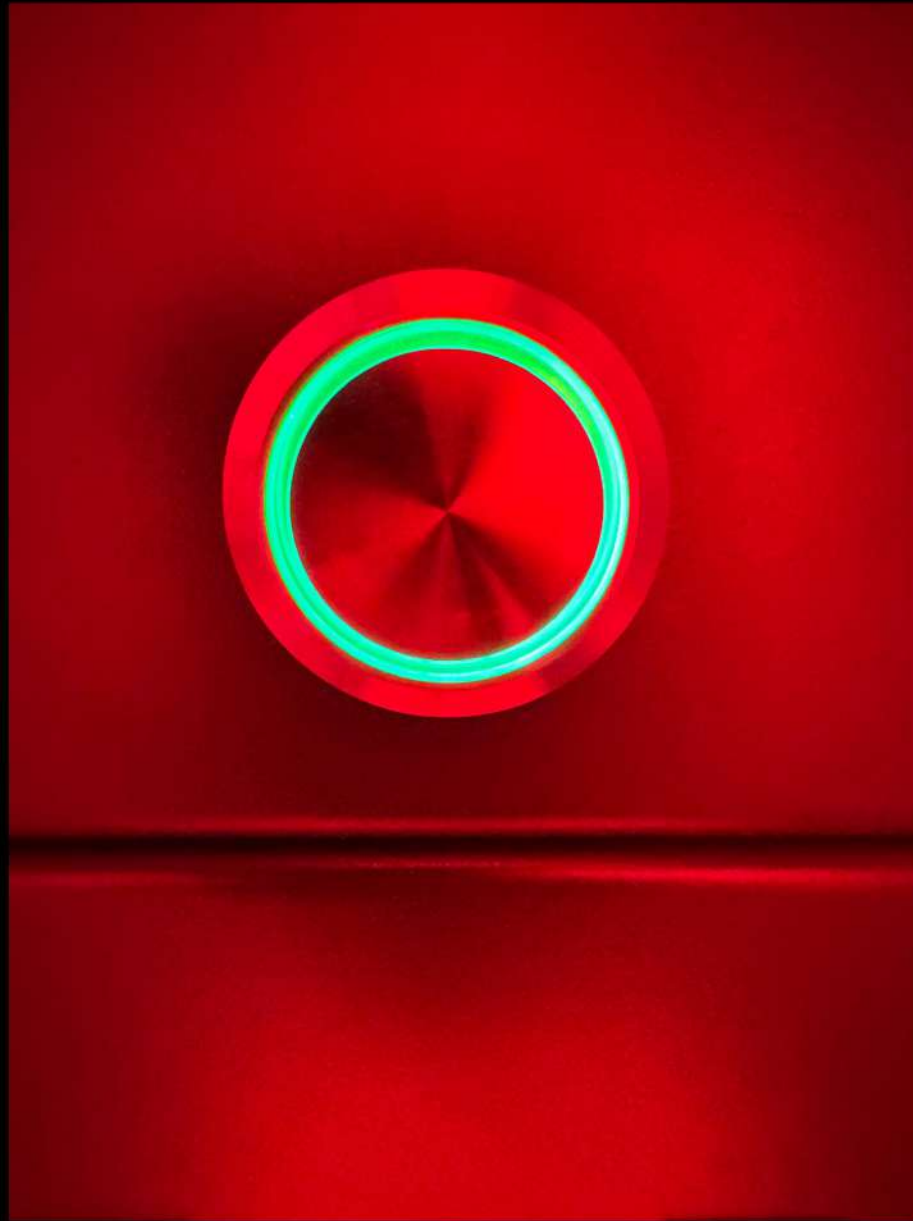
## TEC-SPA MODULE BY ART OF CRYO

The concept, easy to integrate in the daily routine, time-saving and promotes healthy lifestyle. No preparation. No downtime.

M.C.S. - six-sense therapy and thermal rejuvenation.

Vaultz - whole-body cryotherapy.  
Etalon Technology.  
Stable. Durable. Powerful. High-performance.  
Spacious and comfortable.  
Effective and replicable treatments.

Treatments in the Flow System are to boost performance, longevity and rejuvenation.  
Six treatment areas with five levels each cover all customer groups,  
and can be effective for improving body shape, promoting longevity, keeping strength and quality of life.



JOY-UP YOUR LIFE!

[WWW.ARTOFCRYO.COM](http://WWW.ARTOFCRYO.COM)